

Callitrichids

Kim Vaughan

Section leader -

Primates and small mammals

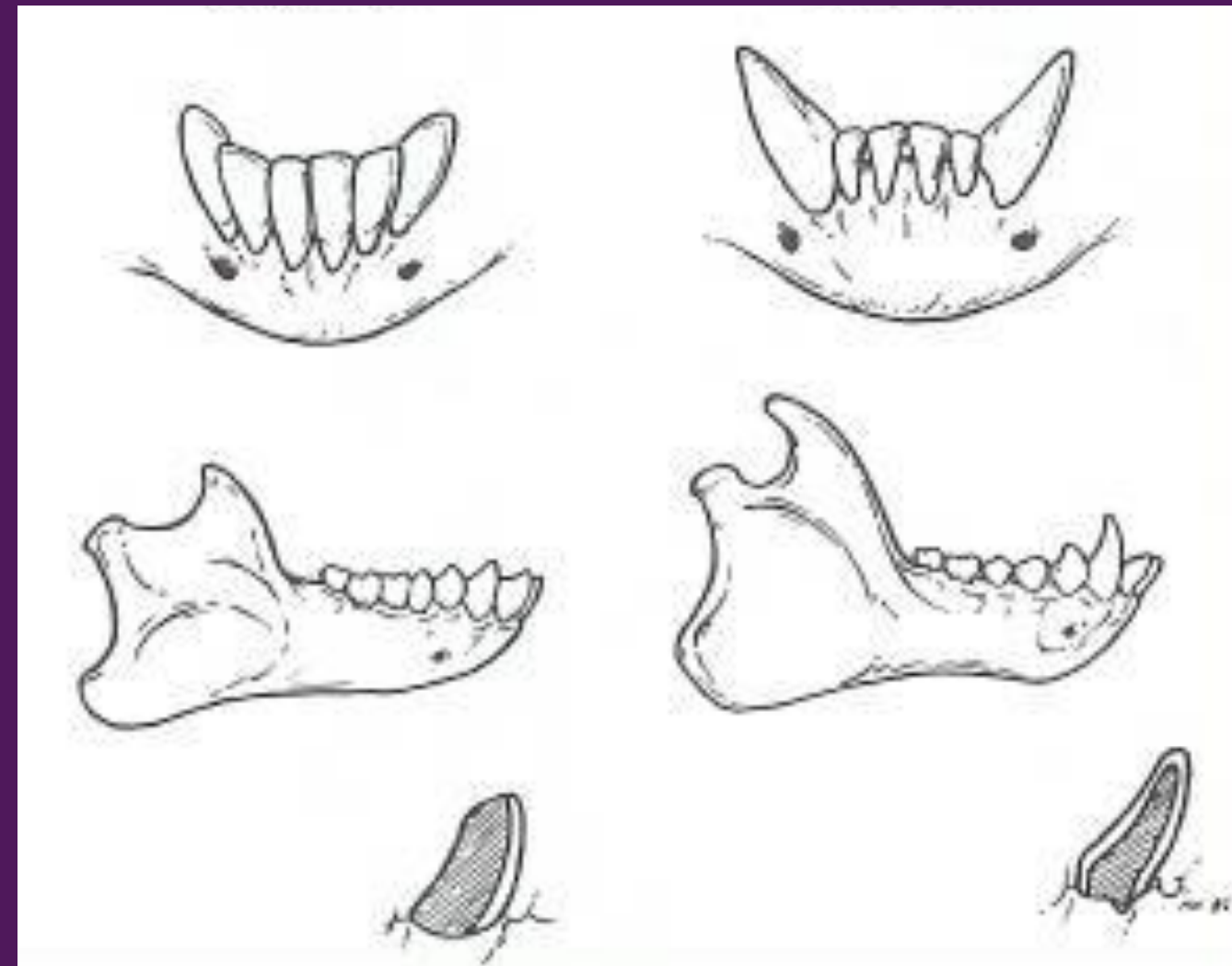
EEP coordinator - Invasive marmosets



- Found in South America
 - Occuring in primary or secondary forests. Inhabiting the middle and lower storeys of the forest
 - 64 species and subspecies:
 - 24 marmosets
 - 35 Tamarins
 - 4 Lion Tamarins
 - Goeldis monkey
 - Represent 30% of the extant New World primates



The marmosets and tamarins are distinguished primarily by the elongated lower incisors of the marmosets, an adaptation to eating plant exudates (gummivory).





Smallest species: Pygmy marmoset
Just over 100g



Largest species: Lion tamarins
Weigh up to 900g

Wild diets

- Primarily Frugivore-insectivores
- Will also feed on flowers, nectar and fungi
- Does differ dependant on species/season
- Callithrix, Callibella and Cebuella are the only callitrichid genera with dental adaptations for tree - gouging
- The other callitrichid genera will oppurtunistically feed on gum



Enclosure size

“Enclosures should be a minimum height of 2.5 metres, and the combined indoor/outdoor area accessible to the animal 80% of their waking hours year-round should be 32.5 cubic metres. Indoor enclosures should also have a minimum total floor size of 3 sq. metres, a height of 2.5 metres and be configured into at least two separable areas to enable easier cleaning and to hold new animals for introduction, for parturition or if unwell. Outdoor enclosures should be a minimum of 10 sq. metres, with a minimum height of 2.5 metres ”

Things to consider

- Enclosure location
- Barriers
- Furnishings
- Planting
- Substrates
- Heating
- UV
- Social dynamics





Provision of UV

Arcadia

Thermal Zoo Pro™

LATEST TECH!!

POWERFUL HYBRID LUMINAIRE

Full Spectrum + UV-B lighting, Full Spectrum-LED and heating to supply for the developed needs of reptiles in large enclosures.

- ✓ PERFECT FOR LARGER ENCLOSURES
- ✓ CREATE A USABLE SUNBATHING AREA
- ✓ RICH IN VISIBLE LIGHT, UV & TERRESTRIAL INFRA-RED

ProT5 JUNGLE DAWN Deep Heat Projector Solar Basking Floodlight

WWW.ARCADIAREPTILE.COM



Lamp + material	Distance from lamp (Inches)	UVI reading
Lamp only	6	4.5
	12	2.1
	24	0.8
Lamp with mesh screen	6	2.2
	12	1.1
	24	0.5
Lamp with guard	6	2.7
	12	1.3
	24	0.4
UV acrylic	6	3.8
	12	1.8
	24	0.7
Glass	6	0.5
	12	0.9
	24	0.2

Summary:

Provision of UV

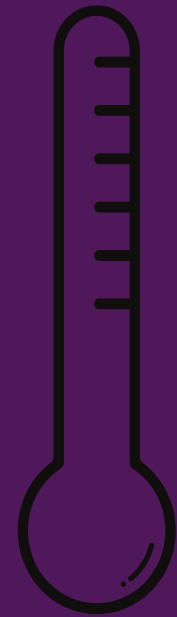
Callitrichids: diurnal forest-dwellers

1	Crepuscular or shade dweller	UVI up to max 0.7 - 1
2	Partial sun or occasional basker	UVI up to max 1 - 3
3	Open or partial sun; thermophilic	UVI up to max 3 - 7
4	Mid-day baskers; thermophilic	UVI up to max 4.5 - 8

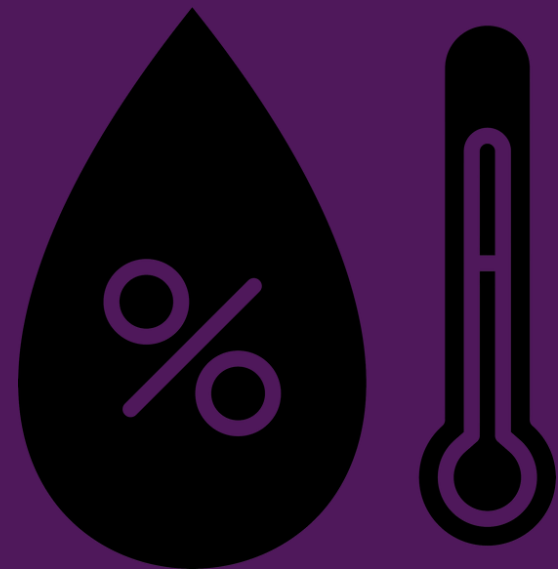




Temperature and Humidity



20-24 degrees celsius



60 - 70%







Nest boxes

- Nest boxes should always be offered
- One box per family group
- Access - Big enough for adults carrying infants
- Can be adapted - slides/doors



Feeding and Nutrition

Feeding and Nutrition

A Veg

Cabbage (any sort)
Chicory
Collards
Kale
Lettuce (any sort)
Spring greens
Spinach
Swiss chard
Turnip greens
Asparagus
Brussel sprouts

B Veg

Broccoli
Cauliflower
Celery
Corn
Cucumber
Fennel
Leeks
Mushrooms
Okra
Peas
Onions
Peppers
Radishes
Tomatoes
Green beans
Broad beans
Avocado
Artichoke

C Veg

Swede
Squash (any sort)
Pumpkin
Sweet potato
Turnips
Jerusalem artichoke
Mangels
Beetroot
Carrots
Celeriac
Parsnips
Kohlrabi
Aubergine
Potato



Daily Diet per Animal 25- 11- 2023 No. of Animals: 3.3

+

Item	Individual weight	Amount for Group
DK leafeater small	5g	30g
Steamed vegetables	5g	30g (1 x 30g)
Raw root vegetables	10g	60g (2 x 30g)
Other vegetables	15g	90g (2 x 45g)
Protein (see protein sheet)	5g	30g
Total	40g	240g

□









**FLOWER ID
&
FEEDING GUIDE**

**Fruit Bats, Callitrichids
&
Other Gum/Nectar Feeding Primates**

Version 1.2022

*Copyright © 2022 Louise Jakobsen
Contribution by Lewis Rowden*

*All rights reserved.
Any unauthorized copying will constitute an infringement of copyright and is strictly prohibited.*

BIAZA
BIOLOGICAL INSTITUTE FOR APPLIED ZOOLOGY AND ANIMAL RESEARCH

CERTIFIED TRAINING

Training





Health problems

- Wasting syndrome
- Metabolic bone disease
- Yersiniosis
- Iron overload disorder





kim.vaughan@hertfordshirezoo.com



amy.heffernan@hertfordshirezoo.com