

Ring-tailed lemur (*Lemur catta*) husbandry

By Chester Zoo Primate
Keepers

Kate and Holly



Contents

- Lemur species at Chester zoo
- A brief history of lemurs
- Species overview
- Interesting facts
- Husbandry and housing
- Diet
- Health care and prevention
- Suitability / considerations for college environment



Lemur species at Chester Zoo





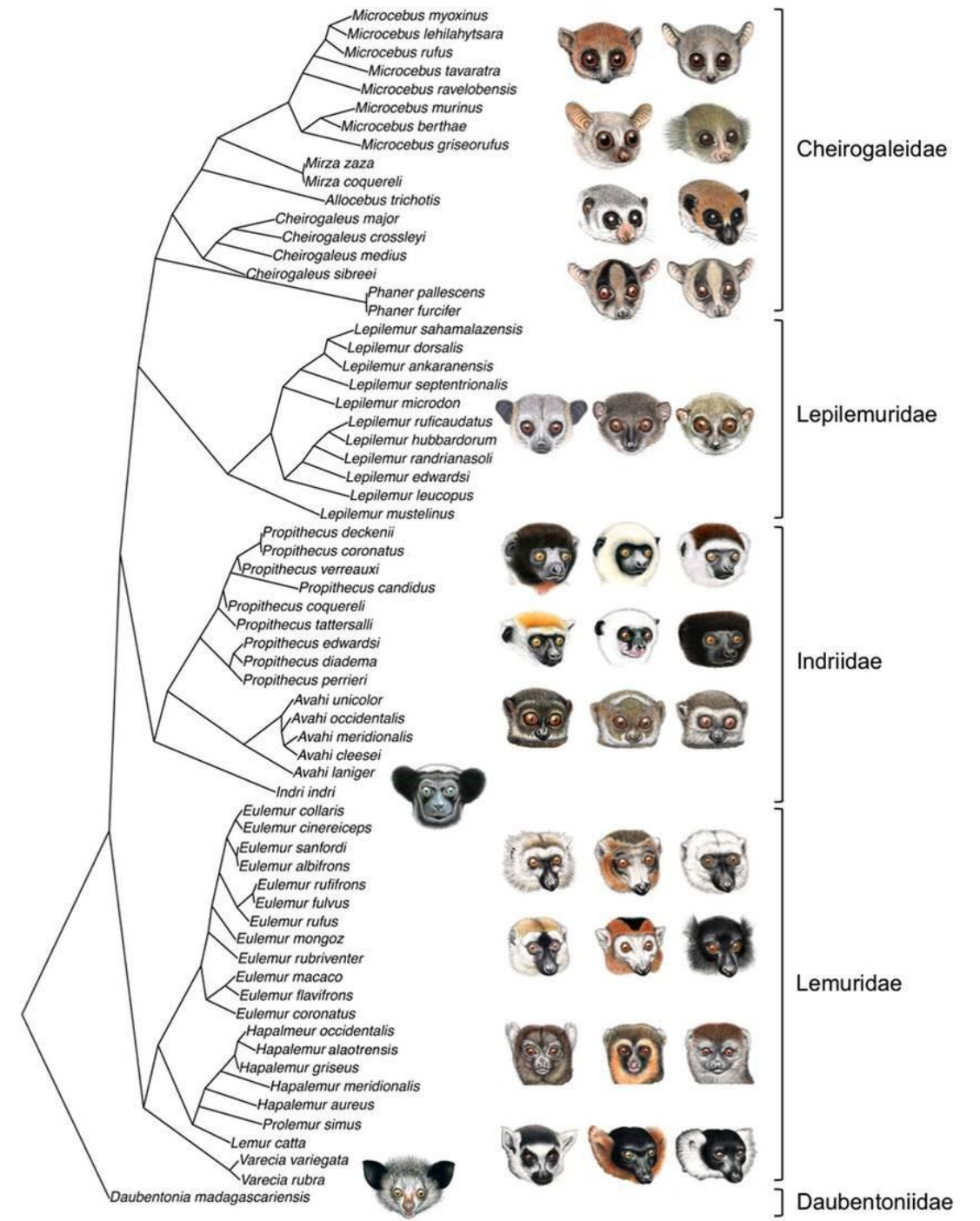
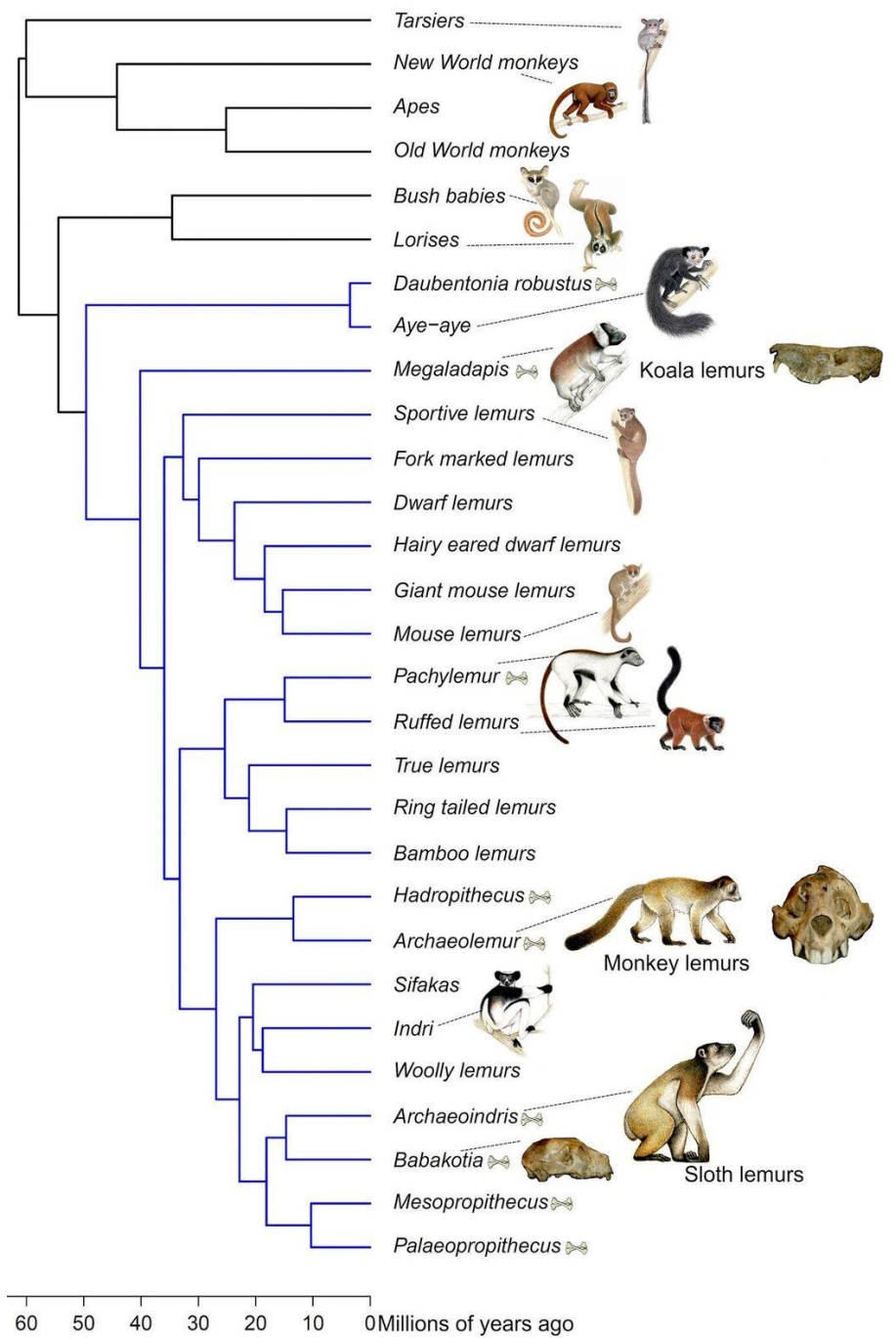


A brief history of Lemurs



Ancestry





60 50 40 30 20 10 0 Millions of years ago

Cheirogaleidae

Lepilemuridae

Indriidae

Lemuridae

Daubentoniidae

Threats to wild Lemurs



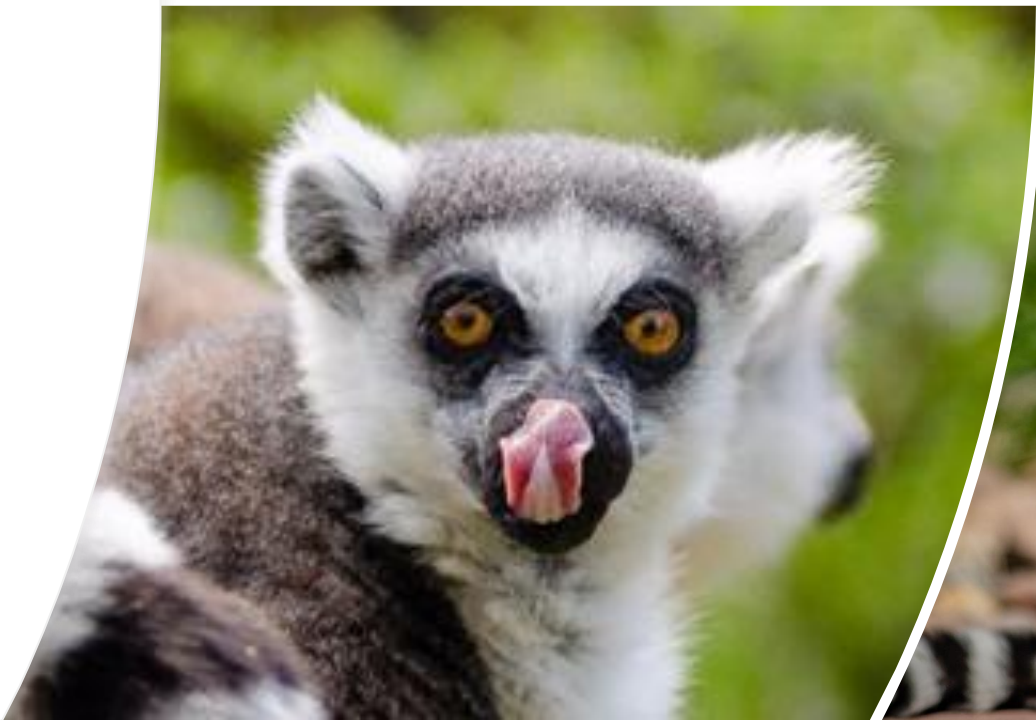
Ring-tailed Lemur overview



Interesting facts

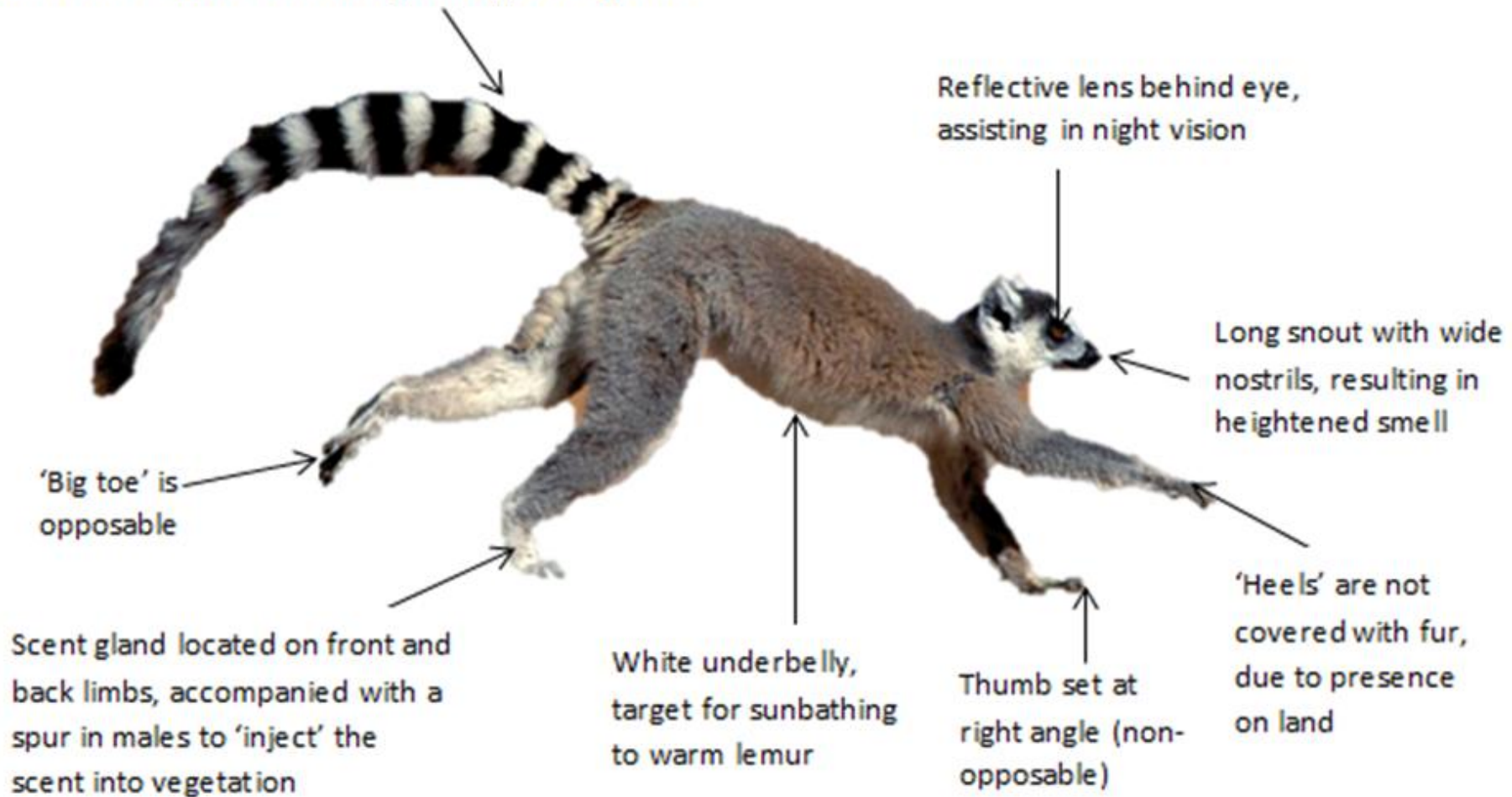


- Males and females scent mark
- Stink fighting
- Tooth comb
- Double tongued
- Ring tailed lemurs love sunbathing





Black and White ringed tail, longer than the body, consisting of ~13 black rings, used in combination with odour from scent glands for asserting dominance as well as attracting the opposite gender



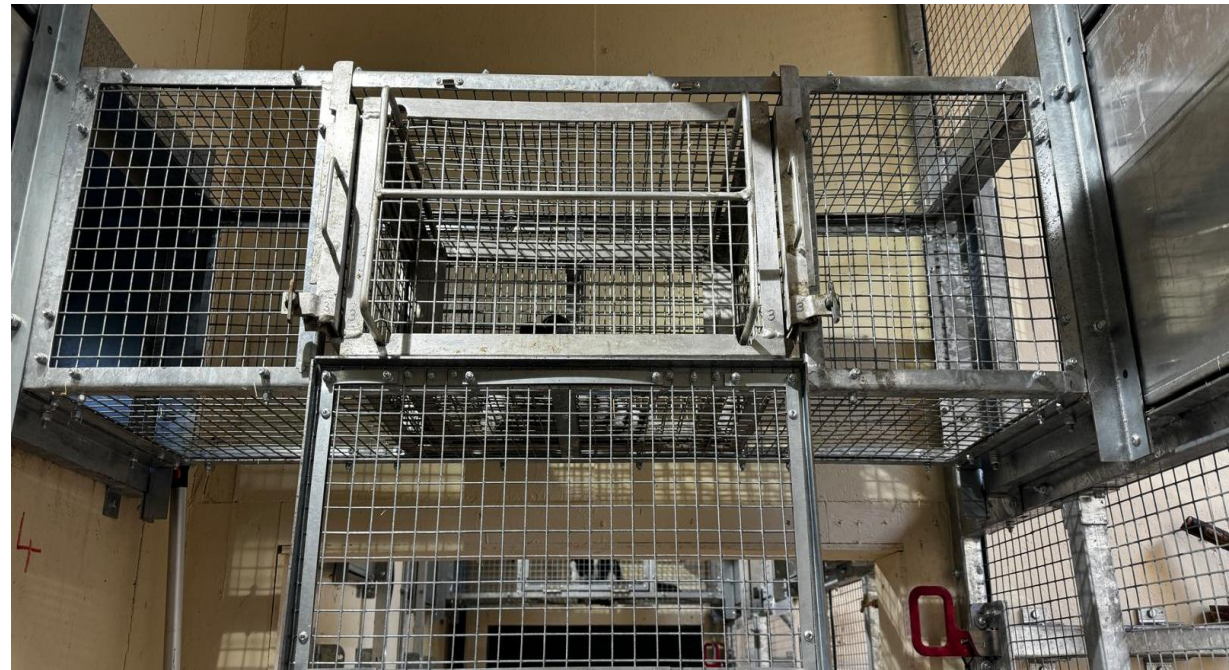
Ring-tailed housing at Chester Zoo





Capture facilities









Lemur Diet



Wild diet

Omnivore -
Feed on mainly fruit,
leaves, flowers and
occasional animal prey



Chester Zoo diet

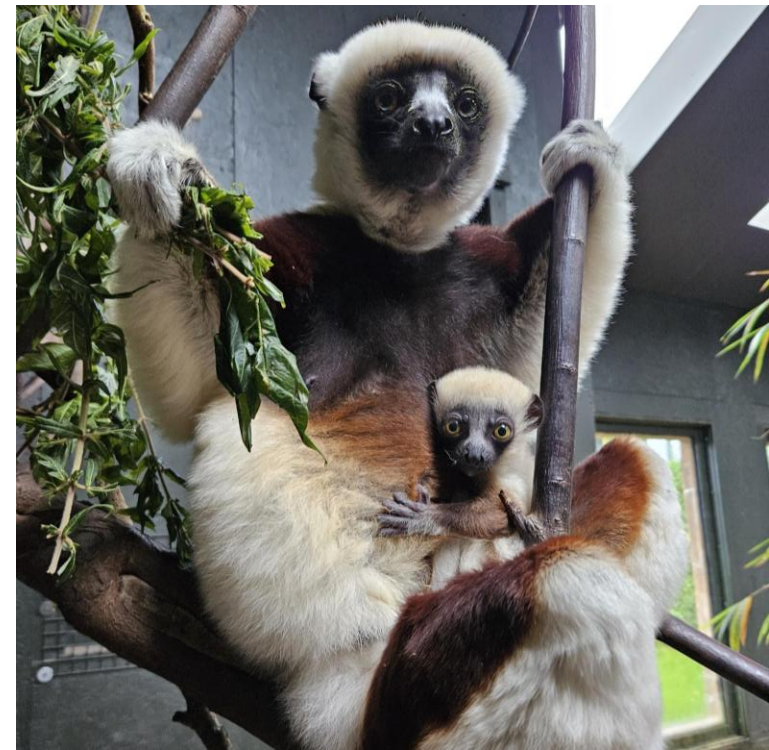
- 3 feeds daily
- Provide browse and flowers such as willow, maple, carnelian, willow herb, - Browse blindness.
- Fresh water daily
- Size of food items







Enrichment



Health Care and Prevention

What to look out for

- Drooling/chewing on one side of mouth
- Weight loss or Overweight
- Withdrawal from group
- Poor appetite
- Discharge
- Diarrhea
- Crouched or hunched body position
- Lethargy
- Poor body/coat condition
- Stereotyping





Prevention

- Appropriate diet and portion size
- Know your animals
- Routine faecal samples
- Faecal scoring
- Body scoring - <https://nagonline.net/wp-content/uploads/2017/03/9-Point-BCS-For-Ring-%E2%80%93Tailed-Lemur.pdf>
- Regular weights
- Good physical environment
- Areas to separate animals



Off-show housing

Suitability / considerations
for college environment



Suitability / considerations for college environment



- Husbandry guidelines
- Enclosure capacity
- Contraception options if having a mixed sex group – group can grow very quickly if multiple females breeding and have twins.
- Respect the animals
- Importance of sharing information with other co-workers
- Diurnal
- Mild tempered
- Most common and recognizable species in zoos



Thank
you for
listening.

Any
questions?